

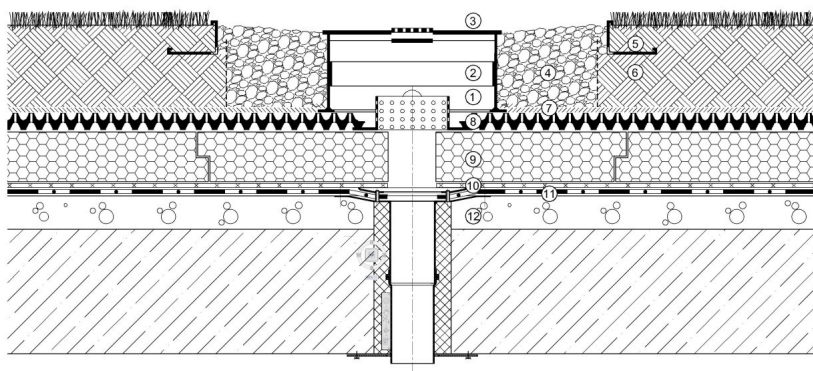
# KSR-10

Drain cover and inspection box for extensive green roofs

120106

## KEY FEATURES

- Can be used on all types of green roofs no matter what type of installed outlet
- Compatible with most drainage systems, including drainage pipes and conduits,
- The lid is lockable and it can withstand foot traffic
- The built-in lid filter prevents debris from washing into the outlet
- It prevents sunlight getting into the outlet
- The inspection boxes have four plug-ins for 2" diameter drainpipes



(1)KSR-10 inspection box, (2)KSR+10 extension element, (3)KSR cover, (4)Gravel, (5)KLS gravel board, (6)SIM growing media, (7)VLF filter geotextile, (8)DiaDrain-40 drainage and reservoir board, (9)Thermal insulation, (10)VLU mechanical protection layer, (11)root resistant waterproofing membrane, (12)roof construction

## SPECIFICATION

KSR-10 inspection boxes are installed on extensive green roofs with a 4" build up to ensure the professional maintenance of outlets and prevent their contamination. The boxes are made of polypropylene with a lockable lid and a stainless steel filter to prevent debris from entering the drainage system. Each box has four precuts around the bottom, for 2" drain pipe connections.

## TECHNICAL DATA

Weight: (lbs)	6.62
Height with lid: (inch)	4.0
Opening at the bottom: (inch)	14-1/2
Diameter: (inch)	15-3/4
Material:	Polypropylene
Color: (RAL)	7032
Installation Standard: (hr/piece)	0.80
Material Requirement: (pc/pc)	1.05

Reviewed: 2018-02-20 11:36:20



## APPLICATION

The KSR-10 drain cover and inspection box that is typically installed on extensive green roofs, with a 4" build up, to help ensure protection and scheduled maintenance of outlets. The KSR is designed to protect drain outlets from UV light, foot traffic, debris, and plant growth, all while allowing proper water flow into the drain. With the aid of the height extension elements KSR+5 and KSR+10 (2" and 4" in height, respectively), it is easy to modify the product height to meet the required substrate depth.



DIADEM USA, Inc.  
721 NW Ninth Avenue, Suite 400, Portland, OR-97209  
info@diademusa.com • www.diademusa.com

Green Up the Roof!



PRODUCT INFORMATION SHEET