

# DIADEM-750

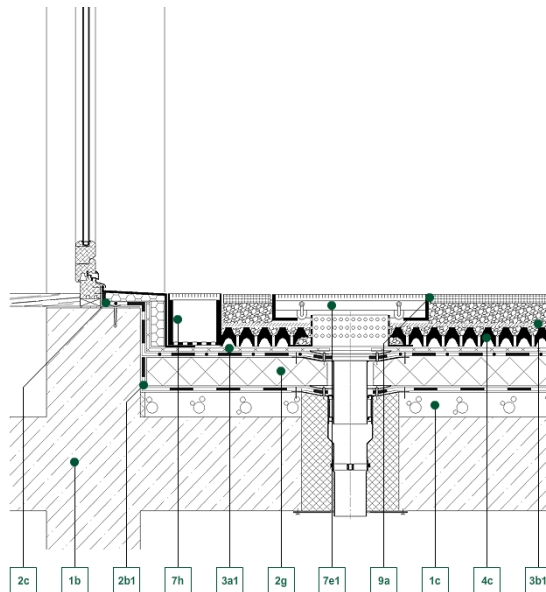
EM 750 - TERRACE OUTLET WALL / RNH TRENCH TRH GRILLE

#901309\_C750\_01



## Detail Drawing

■ Green up the roof!



### Decking constructions:

- 1b - Reinforced concrete structure
- 1c - Slope-forming layer

### Water isolation:

- 2b1 - Vapor blocking layer
- 2c - Waterproof membrane
- 2g - Expanded PS-foam heat insulation

### Geotextile layers:

- 3a1 - VLU-500 mechanical protecting layer
- 3b1 - VLF-200 filter layer

### Drainboards:

- 4c - DE-60 drainage board

### Hydrotechnical products:

- 7e1 - TRH-8/12 terrace grid with adjustable height
- 7h - RNH-8/12 Roof Channel

### Terraces accessories:

- 9a - FK-5 Slab spacer

### Description of section:

Rainwater from the vertical surfaces of the building can often be as much as that accumulating from the horizontal roof surface. It is therefore crucial that these details designed properly preventing water flooding into the building. The RNF Drainage Channel delivers a perfect solution. Paving slabs should be laid with open joints and kept permanently separated by the use of FK Paving Spacers. The TRH provides a cover for the rainwater outlet and is height adjustable in order to accommodate tolerances in the laid paving.

**DIADEM USA, Inc.**

721 NW Ninth Avenue, Suite 400, Portland, OR-97209  
E-mail: [info@diademusa.com](mailto:info@diademusa.com), Web: [www.diademusa.com](http://www.diademusa.com)