

# DIADEM-350

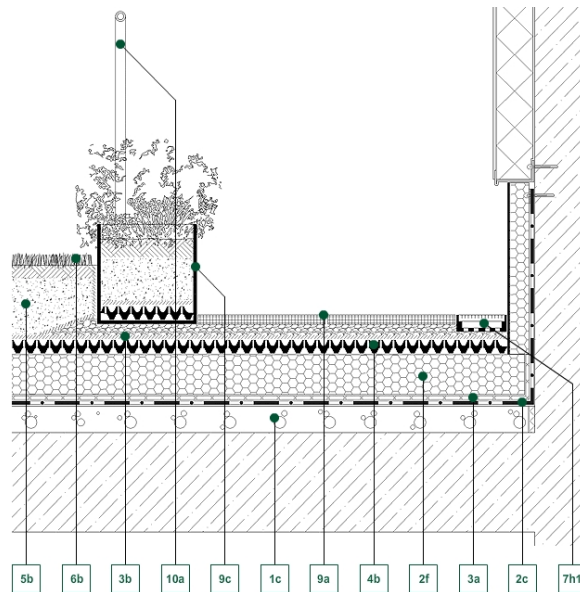
WALL TERRACE / GARDIA GUARDRAIL RNH

#901307\_B350\_01



## Detail Drawing

■ Green up the roof!



### Decking constructions:

- 1b - Reinforced concrete structure
- 1c - Slope-forming layer

### Water isolation:

- 2c - Waterproof membrane
- 2f - Extruded PS-foam thermal insulation

### Geotextile layers:

- 3a - VLU-300 mechanical protecting layer
- 3b - VLF-150 filter layer

### Drainboards:

- 4b - DD-40H Retention Board

### Growth medias:

- 5b - SIM-30 extensive growth medium

### Vegetation:

- 6b - Perennials, lawn

### Hydrotechnical products:

- 7h1 - RNH-8/12 Roof Channel

### Terraces accessories:

- 9a - FK-5 Slab spacer
- 9c - PGE-110 fPlant containers

### Safety technology:

- 10a - DRS-Light Handrail Structure

### Description of section:

Rainwater running down the facade can often be as much as that accumulating from the horizontal roof surface. It is therefore crucial that at the junction of these planes water is prevented from flooding into the building. The RNF Drainage Channel delivers a perfect solution here. Paving slabs should be laid with open joints and kept permanently separated by the use of FK Paving Spacers. The DRS Planter Railing System is a practical, yet aesthetically pleasing means of providing protection and creating demarcated areas.

**DIADEM USA, Inc.**

721 NW Ninth Avenue, Suite 400, Portland, OR-97209  
E-mail: [info@diademusa.com](mailto:info@diademusa.com), Web: [www.diademusa.com](http://www.diademusa.com)