

DIADEM-350

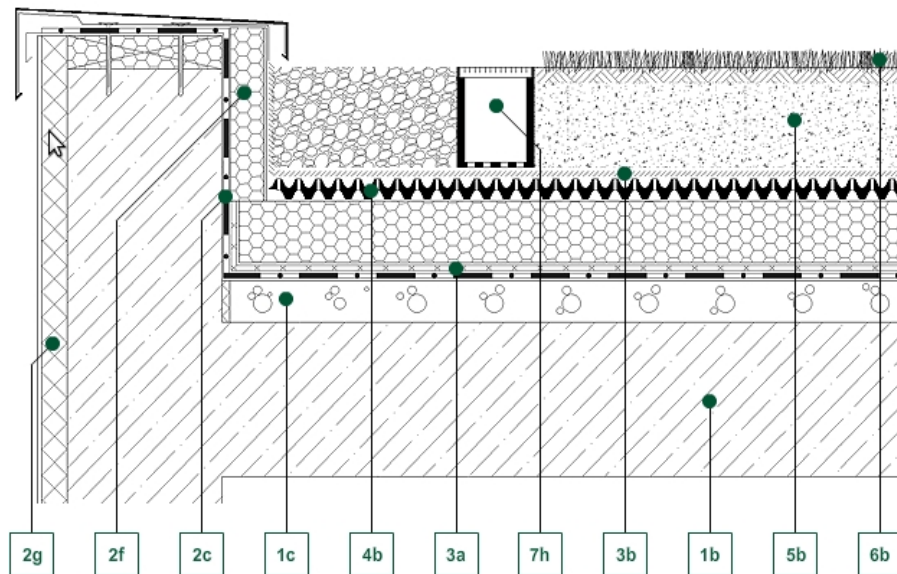
EDGE / RNH DRAINAGE CHANNEL

#901302_A350_01



Detail Drawing

■ Green up the roof!



Decking constructions:

- 1b - Reinforced concrete structure
- 1c - Slope-forming layer

Water isolation:

- 2c - Waterproof membrane
- 2f - Extruded PS-foam thermal insulation

Geotextile layers:

- 3a - VLU-300 mechanical protecting layer
- 3b - VLF-150 filter layer

Drainboards:

- 4b - DD-40H Retention Board

Growth medias:

- 5a - SEM-12 extensive growth medium

Vegetation:

- 6a - Drought-resistant perennials

Hydrotechnical products:

- 7h - RNH-8/12 Roof Channel

Description of section:

An inverted roof installation can be an efficient method of retro fitting insulation in order to bring the building up to current thermal requirements. A limiting factor may be the height of the existing upstands. To help alleviate this challenge the RNS drainage channel can be installed and the required upstand height can be measured from the base.

DIADEM USA, Inc.

721 NW Ninth Avenue, Suite 400, Portland, OR-97209
E-mail: info@diademusa.com, Web: www.diademusa.com